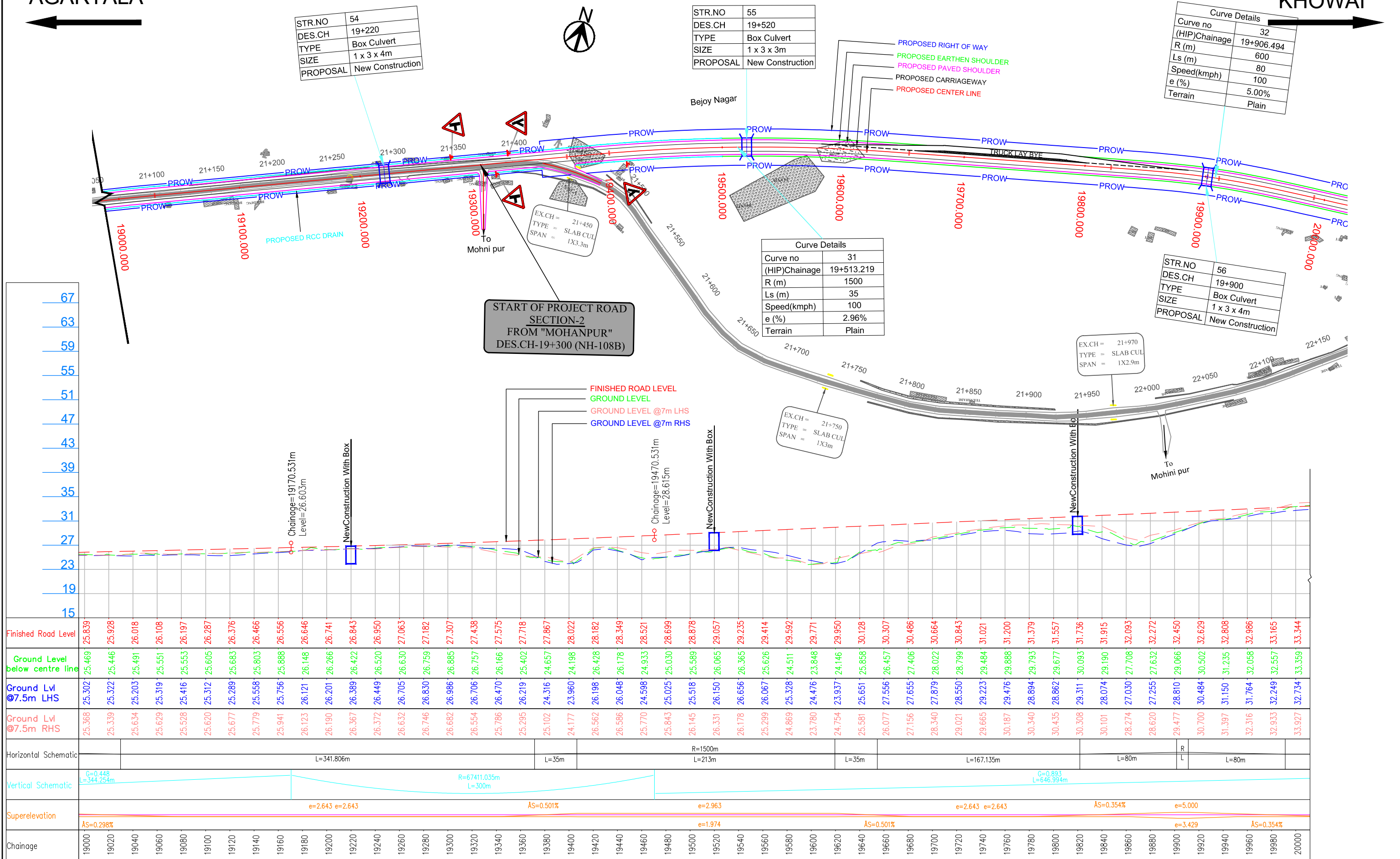


AGARTALA

KHOWAI



| | | | | | | | | | |
|--|--|---|--|--|--|--|--|--|--|
| LEGEND : Design Structure Existing Road Drain | | Project Title:- CONSULTANCY SERVICES FOR FEASIBILITY STUDY, PREPARATION OF DETAILED PROJECT REPORT AND PROVIDING PRE-CONSTRUCTION SERVICES FOR UP-GRADATION OF SELECTED ROAD STRETCHES / CORRIDORS TO TWO LANE WITH PAVED SHOULDER NH CONFIGURATION UNDER BHARAT MALA PROJECT AND NATIONAL HIGHWAYS CONNECTIVITY TO BACKWARD AREAS/RELIGIOUS/TOURIST PLACES OF THE COUNTRY IN THE STATE OF TRIPURA. AGARTALA - KHOWAI SECTION-2 | | CLIENT: NATIONAL HIGHWAYS & INFRASTRUCTURE DEVELOPMENT CORPORATION LTD | | Drawing Title: PLAN & PROFILE DES. CH. 19+000 TO 20+000 Drawing No. :- TASPL/NHIDCL/FDPR/P&P/08 Scale :- 1:2000 Drn Dgn Appd Deepak B.Mishra B.S Pandey | | CONSULTANT: TASPL Technocrats Advisory Services Private Limited in association with Vaishnavi Infratech Services P. Ltd Flat No. 68, Ajanta Apartment, 36 I.P.Extension Patparganj, Delhi-110092 | |
| | | | | | | Sheet : 01 OF 13 Date DEC - 2019 | | | |

AGARTALA

KHOWAI

| | |
|----------|------------------|
| STR.NO | 57 |
| DES.CH | 20+120 |
| TYPE | Box Culvert |
| SIZE | 1 x 2 x 2m |
| PROPOSAL | New Construction |

| | |
|----------|----------------|
| STR.NO | 58 |
| DES.CH | 20+400 |
| TYPE | Box Culvert |
| SIZE | 1 x 2 x 2m |
| PROPOSAL | Reconstruction |

| | |
|-------|------------|
| EX.CH | = 22+550 |
| TYPE | = SLAB CUL |
| SPAN | = 1X1.8m |

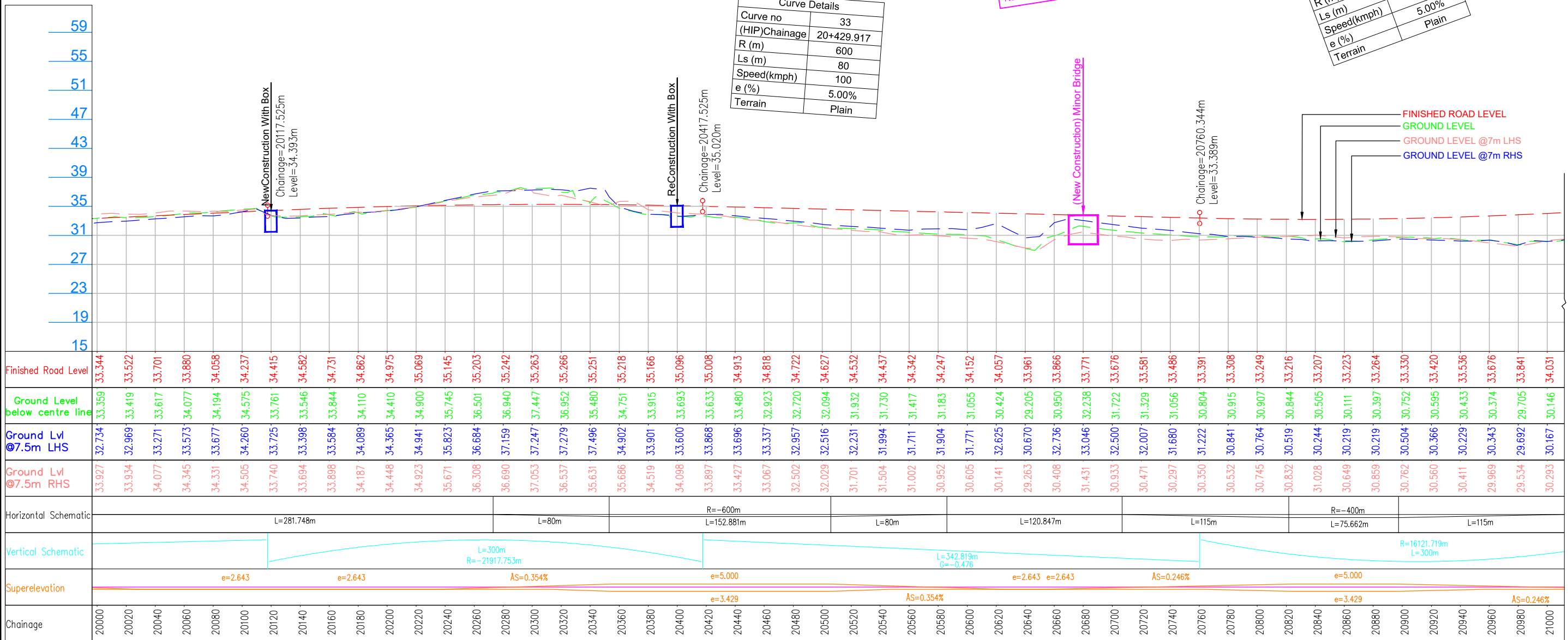
| | |
|-------|----------------|
| EX.CH | = 22+800 |
| TYPE | = Minor Bridge |
| SPAN | = 1X25.3m |

| |
|---------------------------|
| PROPOSED RIGHT OF WAY |
| PROPOSED EARTHEN SHOULDER |
| PROPOSED PAVED SHOULDER |
| PROPOSED CARRIAGEWAY |
| PROPOSED CENTER LINE |
| EXISTING ROAD |

| | |
|--------------------|--------------------|
| STR. NO. | DES. CH.: 20+680 |
| DES. CH.: 20+680 | 1X25m MINOR BRIDGE |
| 1X25m MINOR BRIDGE | NEW CONSTRUCTION |

| | |
|---------------|------------|
| Curve Details | |
| Curve no | 34 |
| (HIP)Chainage | 20+859.733 |
| R (m) | 115 |
| Ls (m) | 100 |
| Speed(kmph) | 5.00% |
| e (%) | Plain |
| Terrain | |

| | |
|---------------|------------|
| Curve Details | |
| Curve no | 33 |
| (HIP)Chainage | 20+429.917 |
| R (m) | 600 |
| Ls (m) | 80 |
| Speed(kmph) | 100 |
| e (%) | 5.00% |
| Terrain | Plain |



LEGEND :

- Design
- Structure
- Existing Road
- Drain

Project Title:-

CONSULTANCY SERVICES FOR FEASIBILITY STUDY, PREPARATION OF DETAILED PROJECT REPORT AND PROVIDING PRE-CONSTRUCTION SERVICES FOR UP-GRADATION OF SELECTED ROAD STRETCHES / CORRIDORS TO TWO LANE WITH PAVED SHOULDER NH CONFIGURATION UNDER BHARAT MALA PROJECT AND NATIONAL HIGHWAYS CONNECTIVITY TO BACKWARD AREAS/RELIGIOUS/TOURIST PLACES OF THE COUNTRY IN THE STATE OF TRIPURA.

AGARTALA - KHOWAI SECTION-2

CLIENT:

NATIONAL HIGHWAYS & INFRASTRUCTURE DEVELOPMENT CORPORATION LTD

Drawing Title:

PLAN & PROFILE
DES. CH. 20+000 TO 21+000

Drawing No. :- TASPL/NHIDCL/FDPR/P&P/08

Scale :- 1:2000

Drn Deepak **Dgn** B.Mishra **Appd** B.S Pandey

Sheet : 02 OF 13

Date DEC - 2019

CONSULTANT:

TASPL

Technocrats Advisory Services Private Limited
in association with Vaishnavi Infratech Services P. Ltd
Flat No. 68, Ajanta Apartment, 36 I.P.Extension
Patparganj, Delhi-110092

AGARTALA

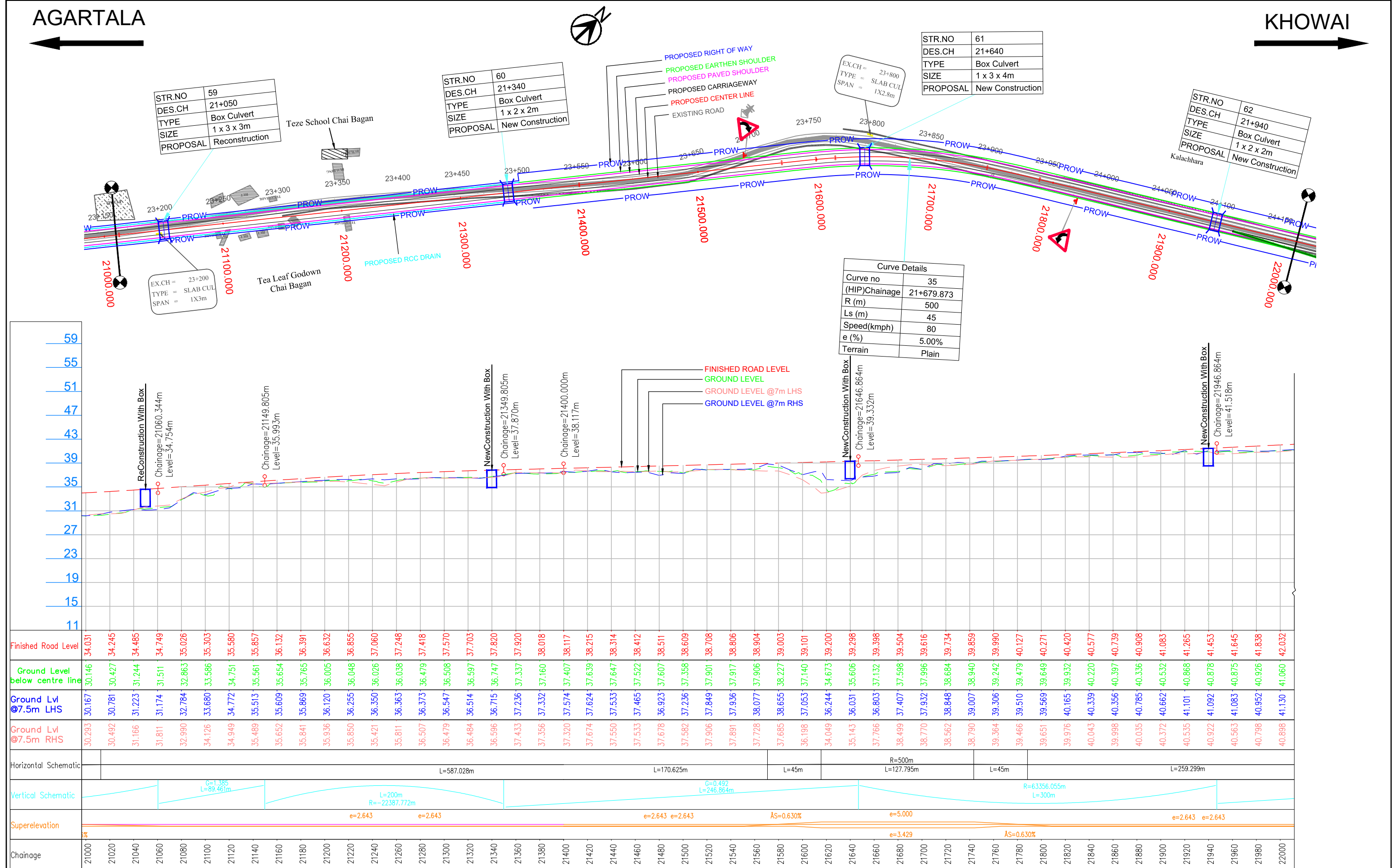
KHOWAI

| | |
|----------|----------------|
| STR.NO | 59 |
| DES.CH | 21+050 |
| TYPE | Box Culvert |
| SIZE | 1 x 3 x 3m |
| PROPOSAL | Reconstruction |

| | |
|----------|------------------|
| STR.NO | 60 |
| DES.CH | 21+340 |
| TYPE | Box Culvert |
| SIZE | 1 x 2 x 2m |
| PROPOSAL | New Construction |

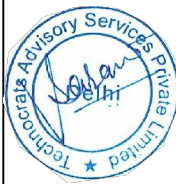
| | |
|----------|------------------|
| STR.NO | 61 |
| DES.CH | 21+640 |
| TYPE | Box Culvert |
| SIZE | 1 x 3 x 4m |
| PROPOSAL | New Construction |

| | |
|----------|------------------|
| STR.NO | 62 |
| DES.CH | 21+940 |
| TYPE | Box Culvert |
| SIZE | 1 x 2 x 2m |
| PROPOSAL | New Construction |



LEGEND :

| | |
|---------------|--|
| Design | |
| Structure | |
| Existing Road | |
| Drain | |



Project Title:-

CONSULTANCY SERVICES FOR FEASIBILITY STUDY, PREPARATION OF DETAILED PROJECT REPORT AND PROVIDING PRE-CONSTRUCTION SERVICES FOR UP-GRADATION OF SELECTED ROAD STRETCHES / CORRIDORS TO TWO LANE WITH PAVED SHOULDER NH CONFIGURATION UNDER BHARAT MALA PROJECT AND NATIONAL HIGHWAYS CONNECTIVITY TO BACKWARD AREAS/RELIGIOUS/TOURIST PLACES OF THE COUNTRY IN THE STATE OF TRIPURA.

AGARTALA - KHOWAI SECTION-2

CLIENT:



NATIONAL HIGHWAYS & INFRASTRUCTURE
DEVELOPMENT CORPORATION LTD

Drawing Title:

PLAN & PROFILE
DES. CH. 21+000 TO 22+000

Drawing No. :- TASPL/NHIDCL/FDPR/P&P/08

Scale :- 1:2000

| | | |
|--------|----------|------------|
| Drn | Dgn. | Appd |
| Deepak | B.Mishra | B.S Pandey |

Sheet :

03 OF 13

Date
DEC - 2019

CONSULTANT:



Technocrats Advisory Services Private Limited
in association with Vaishnavi Infratech Services P. Ltd
Flat No. 68, Ajanta Apartment, 36 I.P.Extension
Patparganj, Delhi-110092

AGARTALA

KHOWAI

| | |
|----------|------------------|
| STR.NO | 63 |
| DES.CH | 22+240 |
| TYPE | Box Culvert |
| SIZE | 1 x 2 x 2m |
| PROPOSAL | New Construction |

Start of Hezamara Bypass
LHS Length-1.750km

| | |
|----------|------------------|
| STR.NO | 64 |
| DES.CH | 22+600 |
| TYPE | Box Culvert |
| SIZE | 1 x 3 x 4m |
| PROPOSAL | New Construction |

| | |
|----------|------------------|
| STR.NO | 65 |
| DES.CH | 22+920 |
| TYPE | Box Culvert |
| SIZE | 1 x 2 x 2m |
| PROPOSAL | New Construction |

| Curve Details | |
|---------------|------------|
| Curve no | 36 |
| (HIP)Chainage | 22+216.901 |
| R (m) | 1200 |
| Ls (m) | 40 |
| Speed(kmph) | 100 |
| e (%) | 3.70% |
| Terrain | Plain |

EX.CH = 24+780
TYPE = SLAB CUL
SPAN = 1X12.9m

EX.CH = 25+350
TYPE = SLAB CUL
SPAN = 1X12.9m

LEGEND :

| | |
|---------------|--|
| Design | |
| Structure | |
| Existing Road | |
| Drain | |



Project Title:-

CONSULTANCY SERVICES FOR FEASIBILITY STUDY, PREPARATION OF DETAILED PROJECT REPORT AND PROVIDING PRE-CONSTRUCTION SERVICES FOR UP-GRADATION OF SELECTED ROAD STRETCHES / CORRIDORS TO TWO LANE WITH PAVED SHOULDER NH CONFIGURATION UNDER BHARAT MALA PROJECT AND NATIONAL HIGHWAYS CONNECTIVITY TO BACKWARD AREAS/RELIGIOUS/TOURIST PLACES OF THE COUNTRY IN THE STATE OF TRIPURA.

AGARTALA - KHOWAI SECTION-2

CLIENT:



NATIONAL HIGHWAYS & INFRASTRUCTURE
DEVELOPMENT CORPORATION LTD

Drawing Title:

PLAN & PROFILE
DES. CH. 22+000 TO 23+000

Drawing No. :- TASPL/NHIDCL/FDPR/P&P/08

Scale :- 1:2000

| | | |
|--------|----------|------------|
| Drn | Dgn. | Appd |
| Deepak | B.Mishra | B.S Pandey |

Sheet :

04 OF 13

Date
DEC - 2019

CONSULTANT:

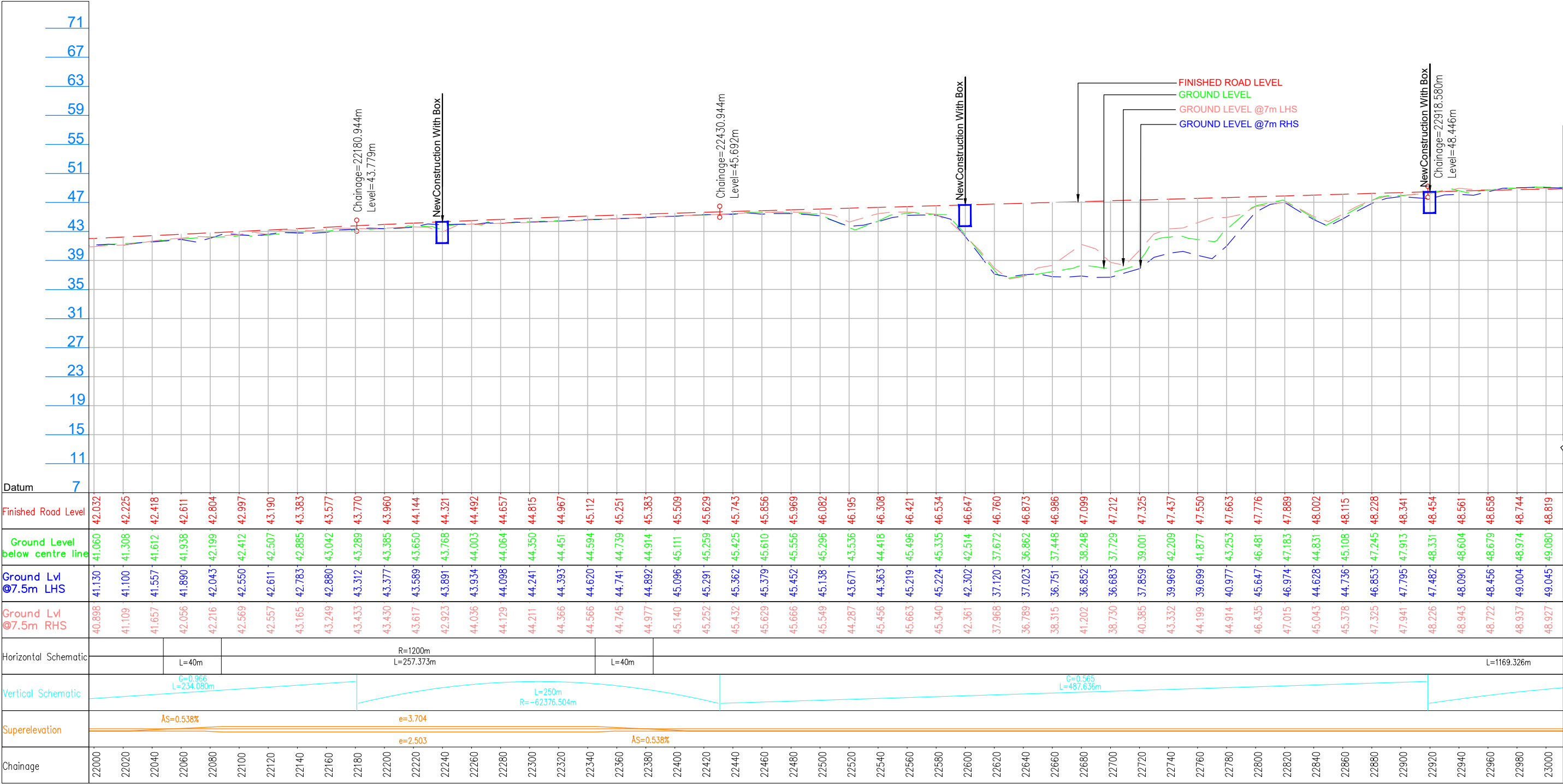




Technocrats Advisory Services Private Limited
in association with Vaishnavi Infratech Services P. Ltd
Flat No. 68, Ajanta Apartment, 36 I.P.Extension
Patparganj, Delhi-110092

AGARTALA



KHOWAI



| | | | | | | | | | |
|--|--|---|--|--|--|--|--|--|--|
| LEGEND : <div>Design</div> <div>Structure</div> <div>Existing Road</div> <div>Drain.....</div> | | Project Title:- CONSULTANCY SERVICES FOR FEASIBILITY STUDY, PREPARATION OF DETAILED PROJECT REPORT AND PROVIDING PRE-CONSTRUCTION SERVICES FOR UP-GRADATION OF SELECTED ROAD STRETCHES / CORRIDORS TO TWO LANE WITH PAVED SHOULDER NH CONFIGURATION UNDER BHARAT MALA PROJECT AND NATIONAL HIGHWAYS CONNECTIVITY TO BACKWARD AREAS/RELIGIOUS/TOURIST PLACES OF THE COUNTRY IN THE STATE OF TRIPURA. AGARTALA - KHOWAI SECTION-2 | | CLIENT: <div></div> NATIONAL HIGHWAYS & INFRASTRUCTURE DEVELOPMENT CORPORATION LTD | | Drawing Title: PLAN & PROFILE DES. CH. 22+000 TO 23+000 <div>Drawing No. :- TASPL/NHIDCL/FDPR/P&P/08</div> <div>Scale :- 1:2000</div> <div>Drn Dgn. Appd</div> <div>Deepak B.Mishra B.S Pandey</div> <div>Sheet : 04A OF 13</div> <div>Date DEC - 2019</div> | | CONSULTANT: <div></div> Technocrats Advisory Services Private Limited in association with Vaishnavi Infratech Services P. Ltd Flat No. 68, Ajanta Apartment, 36 I.P.Extension Patparganj, Delhi-110092 | |
|--|--|---|--|--|--|--|--|--|--|

AGARTALA

KHOWAI

| | |
|----------|------------------|
| STR.NO | 66 |
| DES.CH | 23+260 |
| TYPE | Box Culvert |
| SIZE | 1 x 3 x 4m |
| PROPOSAL | New Construction |

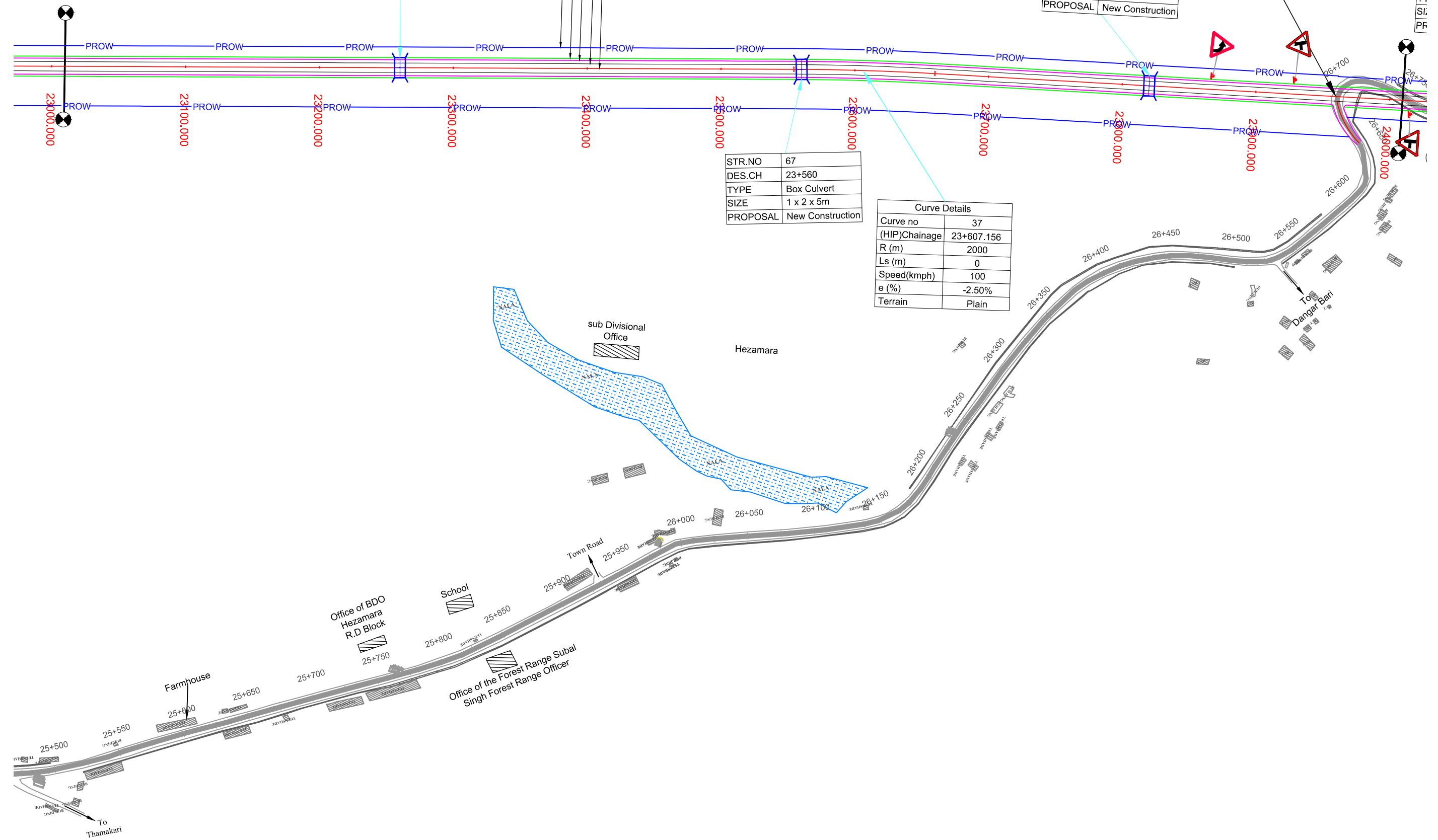
PROPOSED RIGHT OF WAY
PROPOSED EARTHEN SHOULDER
PROPOSED PAVED SHOULDER
PROPOSED CARRIAGEWAY
PROPOSED CENTER LINE

| | |
|----------|------------------|
| STR.NO | 68 |
| DES.CH | 23+820 |
| TYPE | Box Culvert |
| SIZE | 1 x 2 x 2m |
| PROPOSAL | New Construction |

End of Hezamara Bypass
LHS Length-1.750km

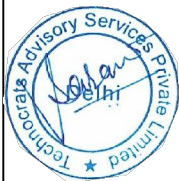
| | |
|----------|------------------|
| STR.NO | 67 |
| DES.CH | 23+560 |
| TYPE | Box Culvert |
| SIZE | 1 x 2 x 5m |
| PROPOSAL | New Construction |

| Curve Details | |
|---------------|------------|
| Curve no | 37 |
| (HIP)Chainage | 23+607.156 |
| R (m) | 2000 |
| Ls (m) | 0 |
| Speed(kmph) | 100 |
| e (%) | -2.50% |
| Terrain | Plain |



LEGEND :

| | |
|---------------|--|
| Design | |
| Structure | |
| Existing Road | |
| Drain | |



Project Title:-

CONSULTANCY SERVICES FOR FEASIBILITY STUDY, PREPARATION OF DETAILED PROJECT REPORT AND PROVIDING PRE-CONSTRUCTION SERVICES FOR UP-GRADATION OF SELECTED ROAD STRETCHES / CORRIDORS TO TWO LANE WITH PAVED SHOULDER NH CONFIGURATION UNDER BHARAT MALA PROJECT AND NATIONAL HIGHWAYS CONNECTIVITY TO BACKWARD AREAS/RELIGIOUS/TOURIST PLACES OF THE COUNTRY IN THE STATE OF TRIPURA.

AGARTALA - KHOWAI SECTION-2

CLIENT:



NATIONAL HIGHWAYS & INFRASTRUCTURE
DEVELOPMENT CORPORATION LTD

Drawing Title:

PLAN & PROFILE
DES. CH. 23+000 TO 24+000

Drawing No. :- TASPL/NHIDCL/FDPR/P&P/08

Scale :- 1:2000

| | | |
|--------|----------|------------|
| Drn | Dgn. | Appd |
| Deepak | B.Mishra | B.S Pandey |

Sheet : 05 OF 13

Date
DEC - 2019

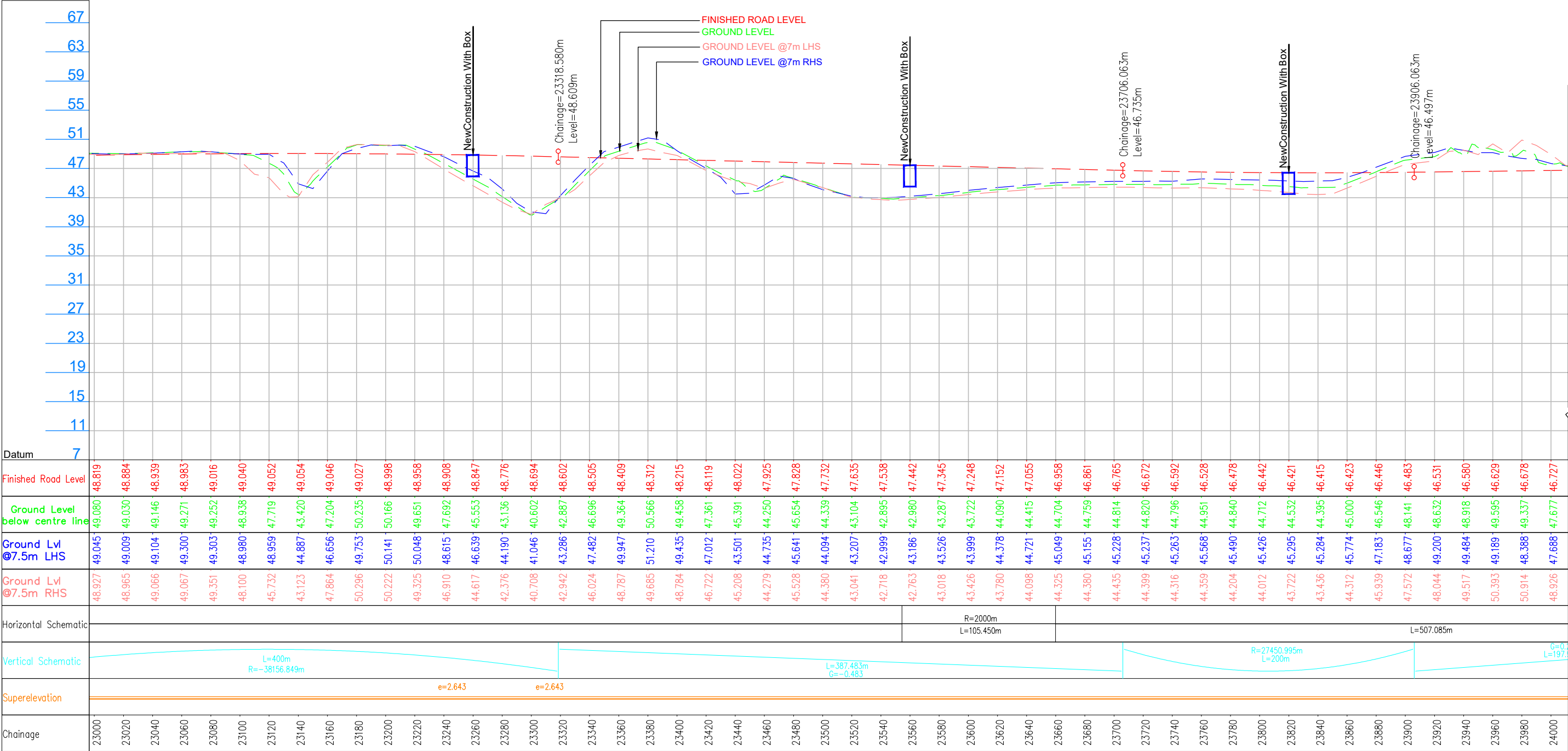
CONSULTANT:



Technocrats Advisory Services Private Limited
in association with Vaishnavi Infratech Services P. Ltd
Flat No. 68, Ajanta Apartment, 36 I.P.Extension
Patparganj, Delhi-110092

AGARTALA

KHOWAI



LEGEND :

| | |
|---------------|--|
| Design | |
| Structure | |
| Existing Road | |
| Drain..... | |

Project Title:-

CONSULTANCY SERVICES FOR FEASIBILITY STUDY, PREPARATION OF DETAILED PROJECT REPORT AND PROVIDING PRE-CONSTRUCTION SERVICES FOR UP-GRADATION OF SELECTED ROAD STRETCHES / CORRIDORS TO TWO LANE WITH PAVED SHOULDER NH CONFIGURATION UNDER BHARAT MALA PROJECT AND NATIONAL HIGHWAYS CONNECTIVITY TO BACKWARD AREAS/RELIGIOUS/TOURIST PLACES OF THE COUNTRY IN THE STATE OF TRIPURA.

AGARTALA - KHOWAI SECTION-2

CLIENT:

NATIONAL HIGHWAYS & INFRASTRUCTURE DEVELOPMENT CORPORATION LTD

Drawing Title:

PLAN & PROFILE
DES. CH. 23+000 TO 24+000

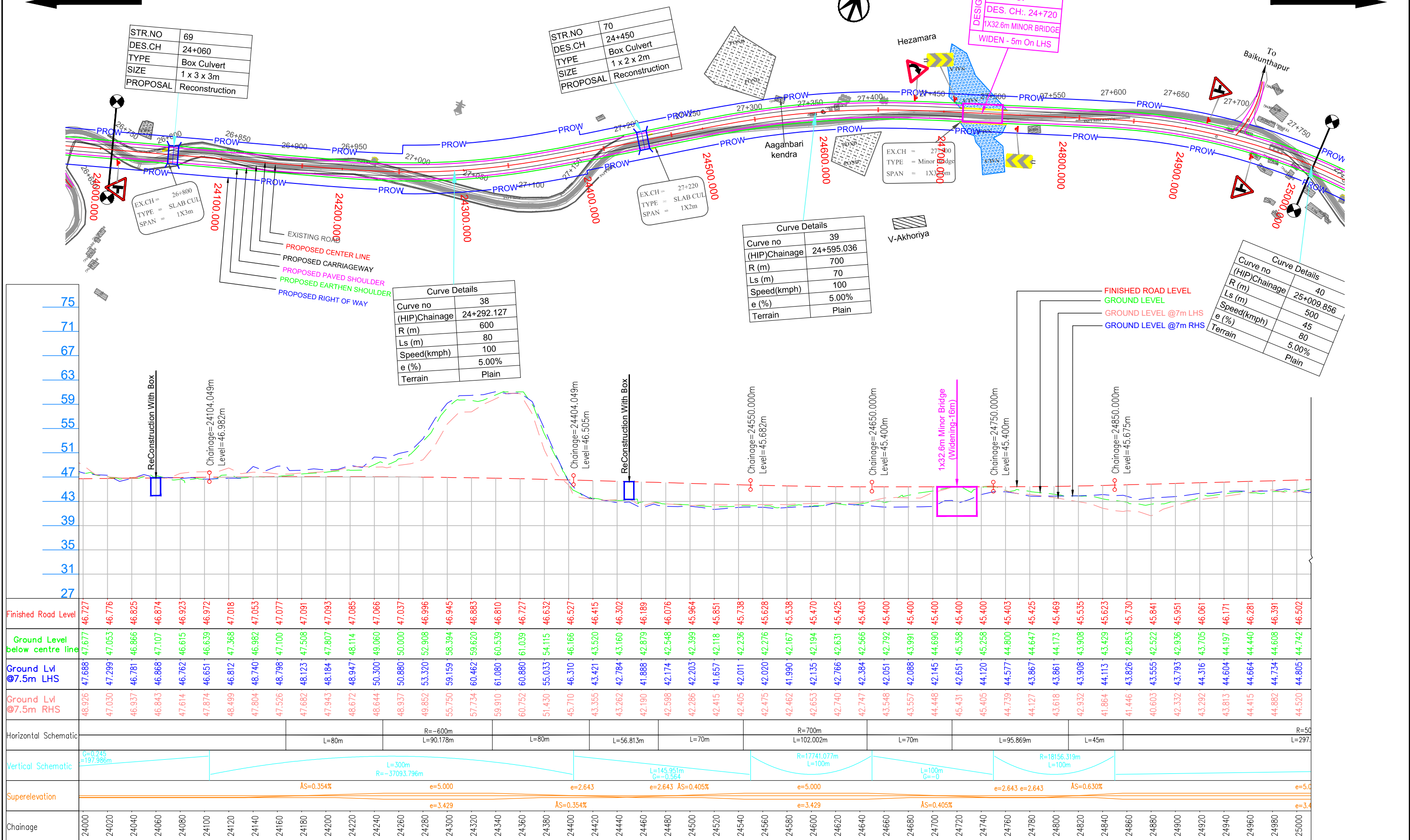
| | | | |
|---|----------|-------------------|------------|
| Drawing No. :- TASPL/NHIDCL/FDPR/P&P/08 | | Sheet : 05A OF 13 | |
| Scale :- 1:2000 | | | |
| Drn | Dgn. | Appd | Date |
| Deepak | B.Mishra | B.S Pandey | DEC - 2019 |

CONSULTANT:

Technocrats Advisory Services Private Limited
in association with Vaishnavi Infratech Services P. Ltd
Flat No. 68, Ajanta Apartment, 36 I.P.Extension
Patparganj, Delhi-110092

AGARTALA

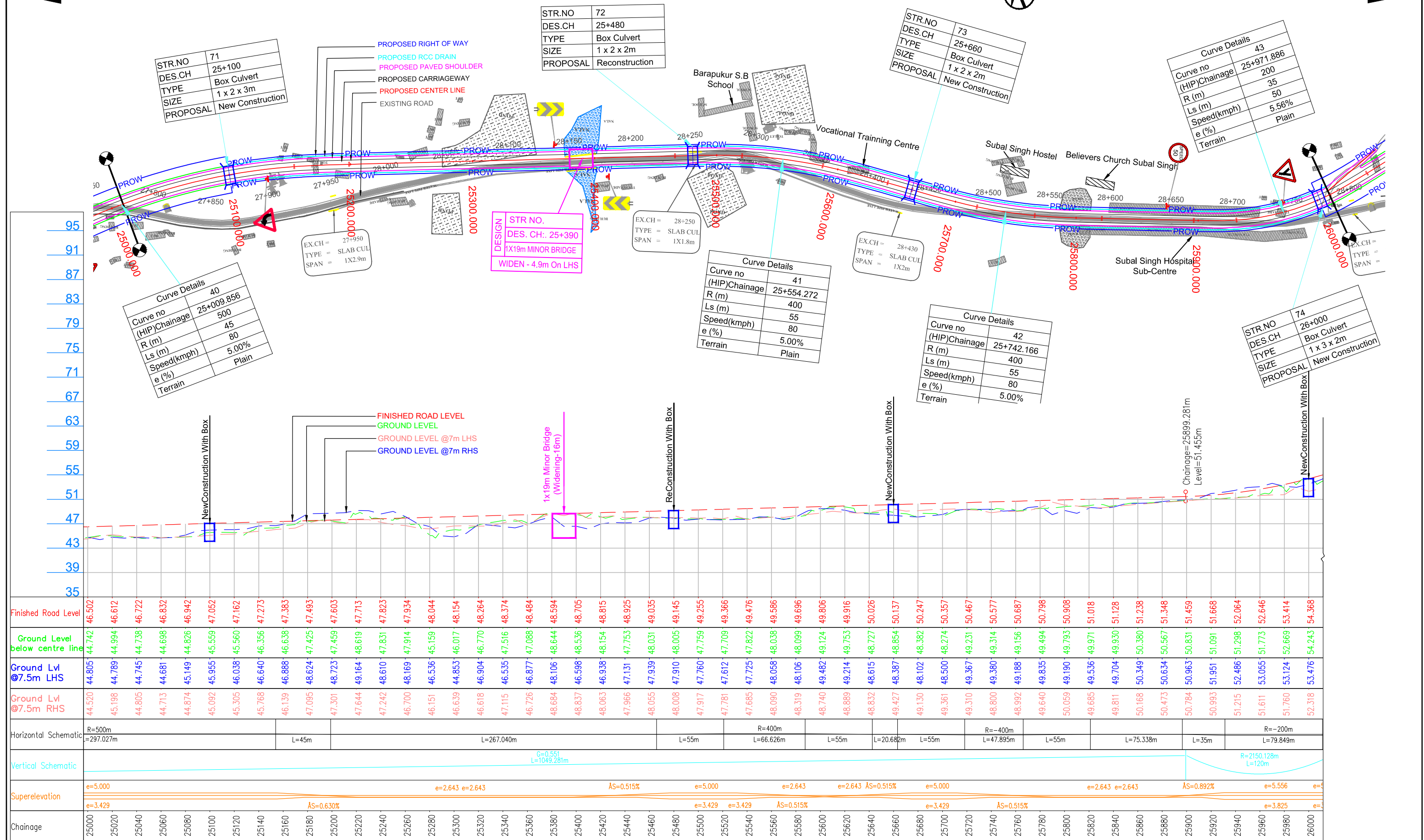
KHOWAI



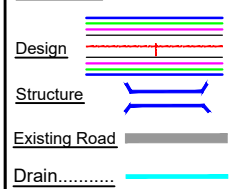
| | | | | | |
|--|--|--|---|---|--|
| LEGEND : Design Structure Existing Road Drain | | Project Title:- CONSULTANCY SERVICES FOR FEASIBILITY STUDY, PREPARATION OF DETAILED PROJECT REPORT AND PROVIDING PRE-CONSTRUCTION SERVICES FOR UP-GRADATION OF SELECTED ROAD STRETCHES / CORRIDORS TO TWO LANE WITH PAVED SHOULDER NH CONFIGURATION UNDER BHARAT MALA PROJECT AND NATIONAL HIGHWAYS CONNECTIVITY TO BACKWARD AREAS/RELIGIOUS/TOURIST PLACES OF THE COUNTRY IN THE STATE OF TRIPURA. AGARTALA - KHOWAI SECTION-2 | CLIENT: NATIONAL HIGHWAYS & INFRASTRUCTURE DEVELOPMENT CORPORATION LTD | Drawing Title: PLAN & PROFILE DES. CH. 24+000 TO 25+000 Drawing No. :- TASPL/NHIDCL/FDPR/P&P/08 Scale :- 1:2000 Drn Deepak Dgn B.Mishra Appd B.S Pandey | CONSULTANT: Technocrats Advisory Services Private Limited in association with Vaishnavi Infratech Services P. Ltd Flat No. 68, Ajanta Apartment, 36 I.P.Extension Patparganj, Delhi-110092 |
| | | Sheet : 06 OF 13 Date DEC - 2019 | | | |

AGARTALA

KHOWAI



LEGEND :



Project Title:-

CONSULTANCY SERVICES FOR FEASIBILITY STUDY, PREPARATION OF DETAILED PROJECT REPORT AND PROVIDING PRE-CONSTRUCTION SERVICES FOR UP-GRADATION OF SELECTED ROAD STRETCHES / CORRIDORS TO TWO LANE WITH PAVED SHOULDER NH CONFIGURATION UNDER BHARAT MALA PROJECT AND NATIONAL HIGHWAYS CONNECTIVITY TO BACKWARD AREAS/RELIGIOUS/TOURIST PLACES OF THE COUNTRY IN THE STATE OF TRIPURA.

AGARTALA - KHOWAI SECTION-2

CLIENT:



NATIONAL HIGHWAYS & INFRASTRUCTURE
DEVELOPMENT CORPORATION LTD

Drawing Title:

PLAN & PROFILE
DES. CH. 25+000 TO 26+000

Drawing No. :- TASPL/NHIDCL/FDPR/P&P/08

Scale :- 1:2000

Drn Dgn Appd

Deepak B.Mishra B.S Pandey

Sheet :

07 OF 13

Date

DEC - 2019

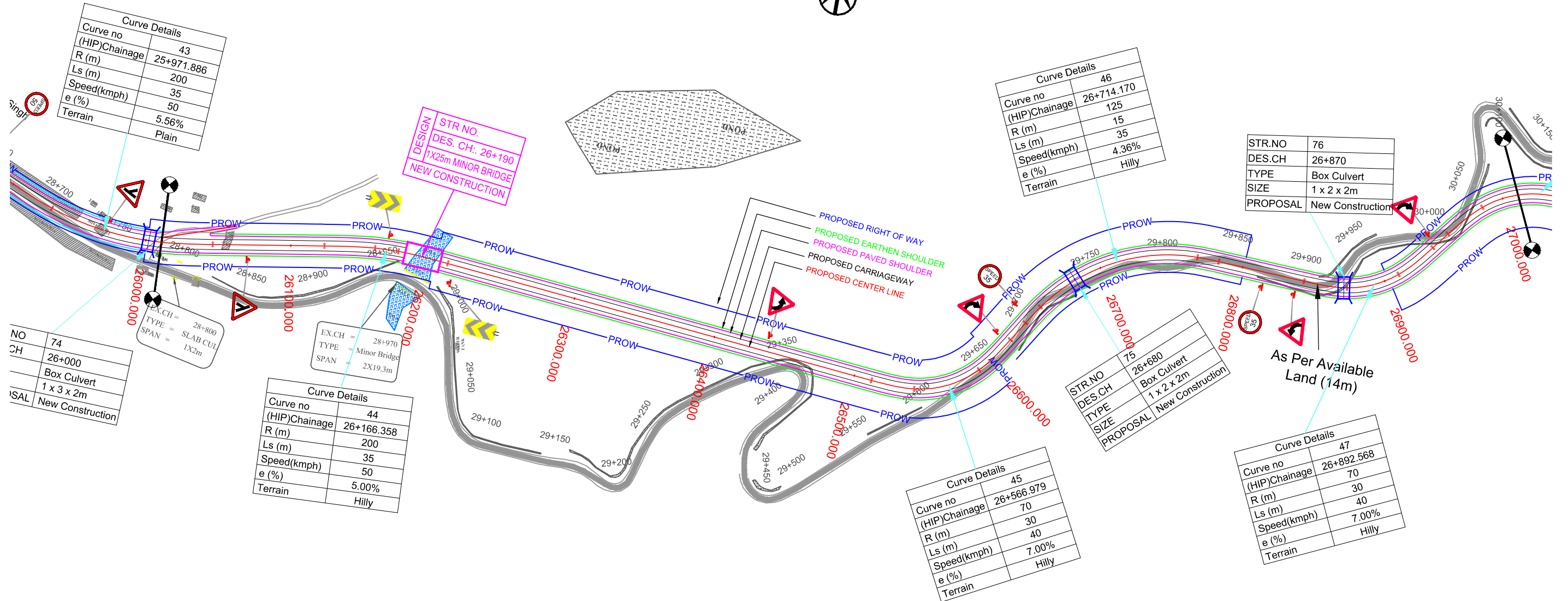
CONSULTANT:



Technocrats Advisory Services Private Limited
in association with Vaishnavi Infratech Services P. Ltd
Flat No. 68, Ajanta Apartment, 36 I.P.Extension
Patparganj, Delhi-110092

AGARTALA

KHOWAI



LEGEND :

| | |
|---------------|--|
| Design | |
| Structure | |
| Existing Road | |
| Drain | |



Project Title:-

CONSULTANCY SERVICES FOR FEASIBILITY STUDY, PREPARATION OF DETAILED PROJECT REPORT AND PROVIDING PRE-CONSTRUCTION SERVICES FOR UP-GRADATION OF SELECTED ROAD STRETCHES / CORRIDORS TO TWO LANE WITH PAVED SHOULDER NH CONFIGURATION UNDER BHARAT MALA PROJECT AND NATIONAL HIGHWAYS CONNECTIVITY TO BACKWARD AREAS/RELIGIOUS/TOURIST PLACES OF THE COUNTRY IN THE STATE OF TRIPURA.

AGARTALA - KHOWAI SECTION-2

CLIENT:



NATIONAL HIGHWAYS & INFRASTRUCTURE
DEVELOPMENT CORPORATION LTD

Drawing Title:

PLAN & PROFILE
DES. CH. 26+000 TO 27+000

Drawing No. :- TASPL/NHIDCL/FDPR/P&P/08

Scale :- 1:2000

Drn Dgn. Appd

Deepak B.Mishra B.S Pandey

Sheet :-

08 OF 13

Date

DEC - 2019

CONSULTANT:



Technocrats Advisory Services Private Limited

in association with Vaishnavi Infratech Services P. Ltd

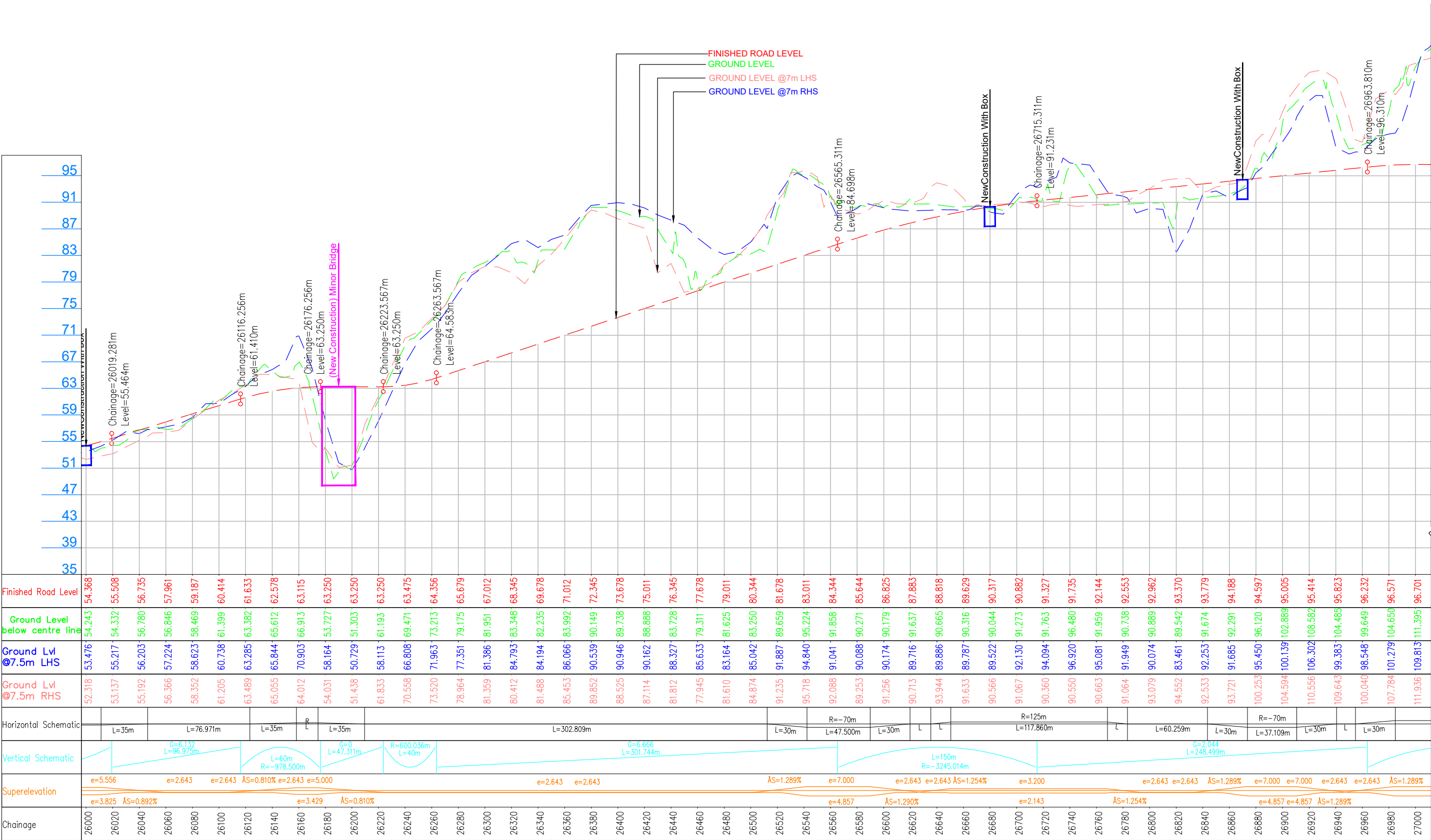
Flat No. 68, Ajanta Apartment, 36 I.P.Extension

Patparganj, Delhi-110092

AGARTALA



KHOWAI



LEGEND :

- Design
- Structure
- Existing Road
- Drain

Project Title:-

CONSULTANCY SERVICES FOR FEASIBILITY STUDY, PREPARATION OF DETAILED PROJECT REPORT AND PROVIDING PRE-CONSTRUCTION SERVICES FOR UP-GRADATION OF SELECTED ROAD STRETCHES / CORRIDORS TO TWO LANE WITH PAVED SHOULDER NH CONFIGURATION UNDER BHARAT MALA PROJECT AND NATIONAL HIGHWAYS CONNECTIVITY TO BACKWARD AREAS/RELIGIOUS/TOURIST PLACES OF THE COUNTRY IN THE STATE OF TRIPURA.

AGARTALA - KHOWAI SECTION-2

CLIENT:

NATIONAL HIGHWAYS & INFRASTRUCTURE DEVELOPMENT CORPORATION LTD

Drawing Title: PLAN & PROFILE
DES. CH. 26+000 TO 27+000

Drawing No. :- TASPL/NHIDCL/FDPR/P&P/08

Scale :- 1:2000

| Drn | Dgn. | Appd |
|--------|----------|------------|
| Deepak | B.Mishra | B.S Pandey |

Sheet : 08A OF 13

Date DEC - 2019

CONSULTANT:

Technocrats Advisory Services Private Limited
in association with Vaishnavi Infratech Services P. Ltd
Flat No. 68, Ajanta Apartment, 36 I.P.Extension
Patparganj, Delhi-110092

AGARTALA

KHOWAI

| Curve Details | |
|---------------|------------|
| Curve no | 48 |
| (HIP)Chainage | 27+029.704 |
| R (m) | 70 |
| Ls (m) | 30 |
| Speed(kmph) | 40 |
| e (%) | 7.00% |
| Terrain | Hilly |

| Curve Details | |
|---------------|------------|
| Curve no | 50 |
| (HIP)Chainage | 27+447.579 |
| R (m) | 100 |
| Ls (m) | 30 |
| Speed(kmph) | 40 |
| e (%) | 7.00% |
| Terrain | Hilly |

| Curve Details | |
|---------------|------------|
| Curve no | 53 |
| (HIP)Chainage | 28+023.207 |
| R (m) | 50 |
| Ls (m) | 20 |
| Speed(kmph) | 30 |
| e (%) | 7.00% |
| Terrain | Hilly |

| Curve Details | |
|---------------|------------|
| Curve no | 52 |
| (HIP)Chainage | 27+879.556 |
| R (m) | 100 |
| Ls (m) | 20 |
| Speed(kmph) | 40 |
| e (%) | 7.00% |
| Terrain | Hilly |

| | |
|----------|------------------|
| STR.NO | 80 |
| DES.CH | 27+960 |
| TYPE | Box Culvert |
| SIZE | 1 x 2 x 2m |
| PROPOSAL | New Construction |

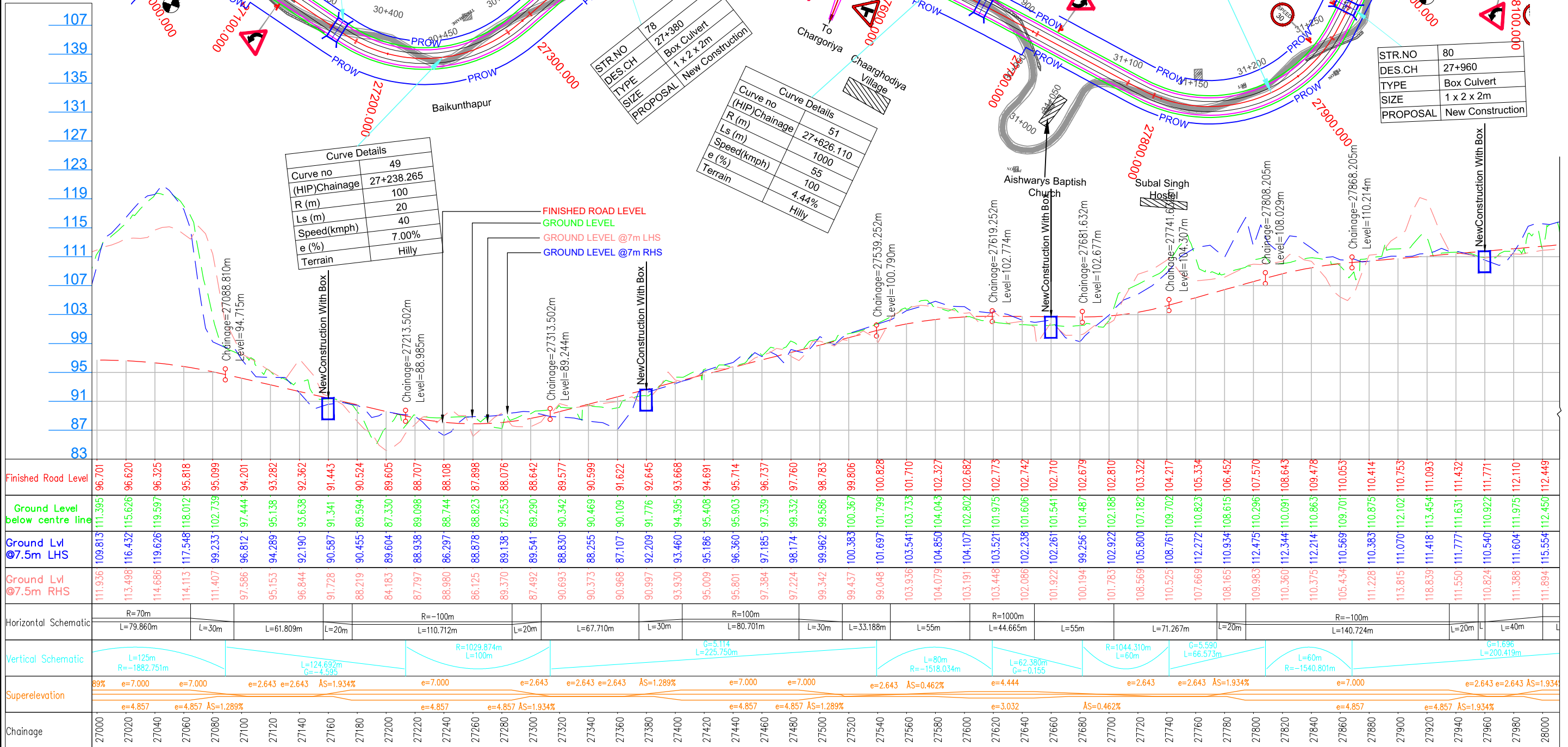
| | |
|----------|------------------|
| STR.NO | 77 |
| DES.CH | 27+160 |
| TYPE | Box Culvert |
| SIZE | 1 x 3 x 2m |
| PROPOSAL | New Construction |

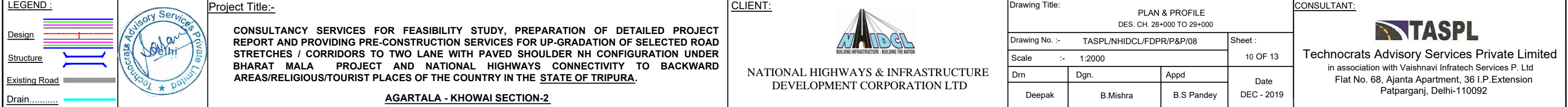
| | |
|----------|------------------|
| STR.NO | 79 |
| DES.CH | 27+660 |
| TYPE | Box Culvert |
| SIZE | 1 x 2 x 2m |
| PROPOSAL | New Construction |

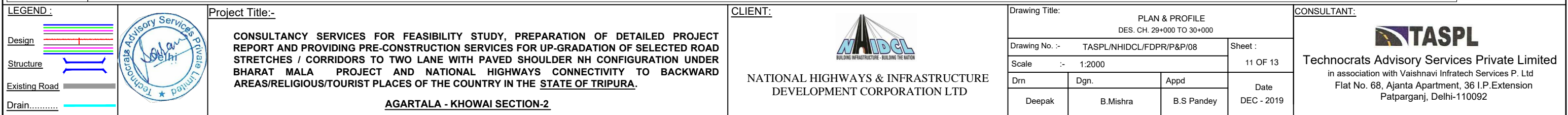
| | |
|----------|------------------|
| STR.NO | 78 |
| DES.CH | 27+380 |
| TYPE | Box Culvert |
| SIZE | 1 x 2 x 2m |
| PROPOSAL | New Construction |

| Curve Details | |
|---------------|------------|
| Curve no | 51 |
| (HIP)Chainage | 27+626.110 |
| R (m) | 1000 |
| Ls (m) | 55 |
| Speed(kmph) | 100 |
| e (%) | 4.44% |
| Terrain | Hilly |

| Curve Details | |
|---------------|------------|
| Curve no | 49 |
| (HIP)Chainage | 27+238.265 |
| R (m) | 100 |
| Ls (m) | 20 |
| Speed(kmph) | 40 |
| e (%) | 7.00% |
| Terrain | Hilly |

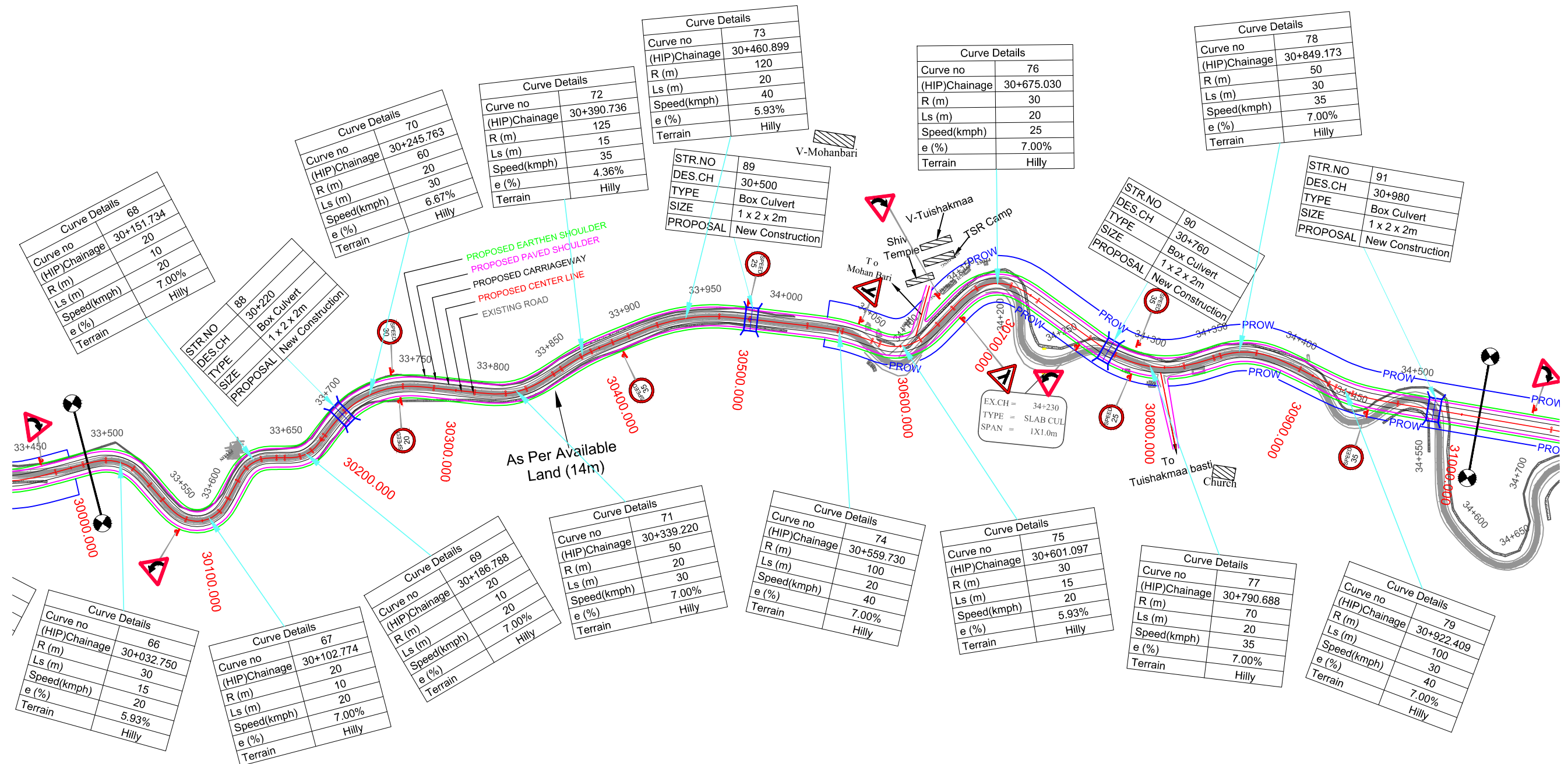






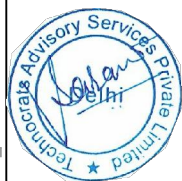
AGARTALA

KHOWAI



LEGEND :

| | |
|---------------|--|
| Design | |
| Structure | |
| Existing Road | |
| Drain | |



Project Title:-

CONSULTANCY SERVICES FOR FEASIBILITY STUDY, PREPARATION OF DETAILED PROJECT REPORT AND PROVIDING PRE-CONSTRUCTION SERVICES FOR UP-GRADATION OF SELECTED ROAD STRETCHES / CORRIDORS TO TWO LANE WITH PAVED SHOULDER NH CONFIGURATION UNDER BHARAT MALA PROJECT AND NATIONAL HIGHWAYS CONNECTIVITY TO BACKWARD AREAS/RELIGIOUS/TOURIST PLACES OF THE COUNTRY IN THE STATE OF TRIPURA.

AGARTALA - KHOWAI SECTION-2

CLIENT:



NATIONAL HIGHWAYS & INFRASTRUCTURE
DEVELOPMENT CORPORATION LTD

Drawing Title:

PLAN & PROFILE
DES. CH. 30+000 TO 31+000

Drawing No. :- TASPL/NHIDCL/FDPR/P&P/08

Scale :- 1:2000

Drn Dgn Appd

Deepak B.Mishra B.S Pandey

Sheet :

12 OF 13

Date

DEC - 2019

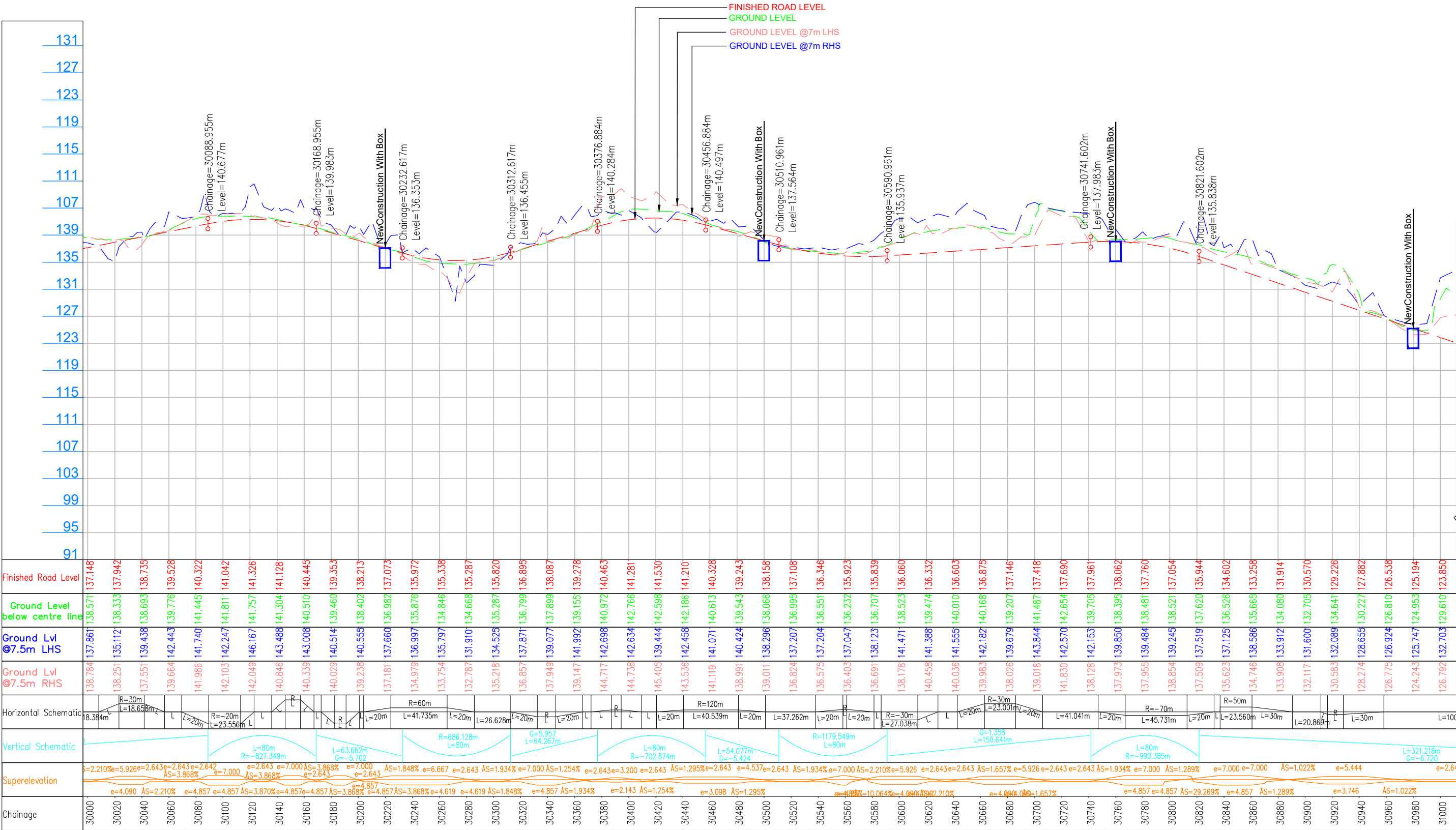
CONSULTANT:



Technocrats Advisory Services Private Limited
in association with Vaishnavi Infratech Services P. Ltd
Flat No. 68, Ajanta Apartment, 36 I.P.Extension
Patparganj, Delhi-110092

AGARTALA

KHOWAI



LEGEND :

- Design
- Structure
- Existing Road
- Drain

Project Title:-

CONSULTANCY SERVICES FOR FEASIBILITY STUDY, PREPARATION OF DETAILED PROJECT REPORT AND PROVIDING PRE-CONSTRUCTION SERVICES FOR UP-GRADATION OF SELECTED ROAD STRETCHES / CORRIDORS TO TWO LANE WITH PAVED SHOULDER NH CONFIGURATION UNDER BHARAT MALA PROJECT AND NATIONAL HIGHWAYS CONNECTIVITY TO BACKWARD AREAS/RELIGIOUS/TOURIST PLACES OF THE COUNTRY IN THE STATE OF TRIPURA.

AGARTALA - KHOWAI SECTION-2

CLIENT:

NATIONAL HIGHWAYS & INFRASTRUCTURE DEVELOPMENT CORPORATION LTD

Drawing Title:

PLAN & PROFILE
DES. CH. 30+000 TO 31+000

Drawing No. :- TASPL/NHIDCL/FDPR/P&P/08

Scale :- 1:2000

Drn Deepak **Dgn.** B.Mishra **Appd** B.S Pandey

Sheet : 12A OF 13

Date DEC - 2019

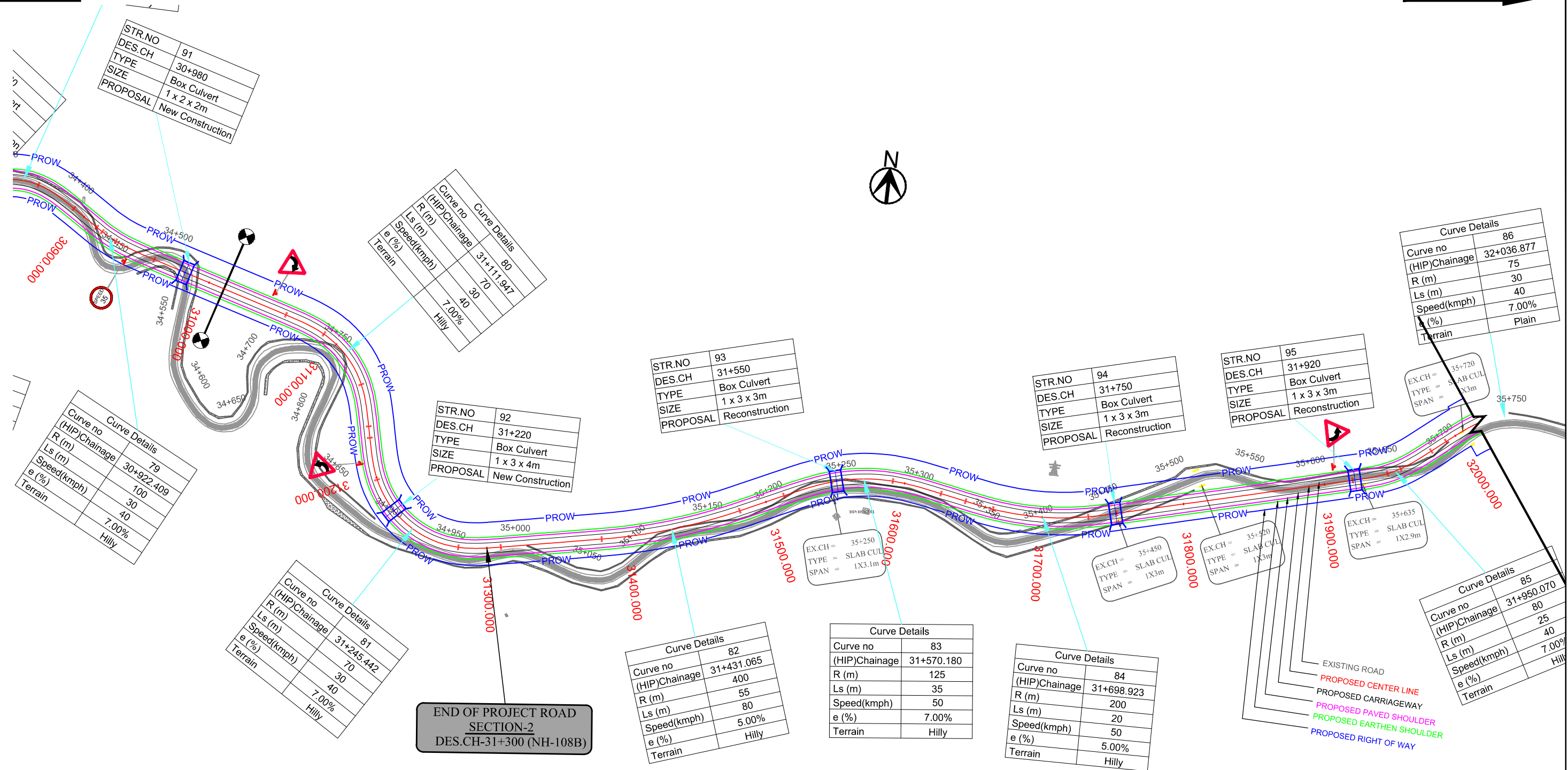
CONSULTANT:

TASPL

Technocrats Advisory Services Private Limited
in association with Vaishnavi Infratech Services P. Ltd
Flat No. 68, Ajanta Apartment, 36 I.P.Extension
Patparganj, Delhi-110092

AGARTALA

KHOWAI



LEGEND :

| | |
|---------------|--|
| Design | |
| Structure | |
| Existing Road | |
| Drain | |



Project Title:-

CONSULTANCY SERVICES FOR FEASIBILITY STUDY, PREPARATION OF DETAILED PROJECT REPORT AND PROVIDING PRE-CONSTRUCTION SERVICES FOR UP-GRADATION OF SELECTED ROAD STRETCHES / CORRIDORS TO TWO LANE WITH PAVED SHOULDER NH CONFIGURATION UNDER BHARAT MALA PROJECT AND NATIONAL HIGHWAYS CONNECTIVITY TO BACKWARD AREAS/RELIGIOUS/TOURIST PLACES OF THE COUNTRY IN THE STATE OF TRIPURA.

AGARTALA - KHOWAI SECTION-2

CLIENT:



NATIONAL HIGHWAYS & INFRASTRUCTURE
DEVELOPMENT CORPORATION LTD

Drawing Title:

PLAN & PROFILE
DES. CH. 31+000 TO 32+000

Drawing No. :- TASPL/NHIDCL/FDPR/P&P/08

Scale :- 1:2000

Drn Dgn Appd

Deepak B.Mishra B.S Pandey

Sheet :

13 OF 13

Date

DEC - 2019

CONSULTANT:



Technocrats Advisory Services Private Limited

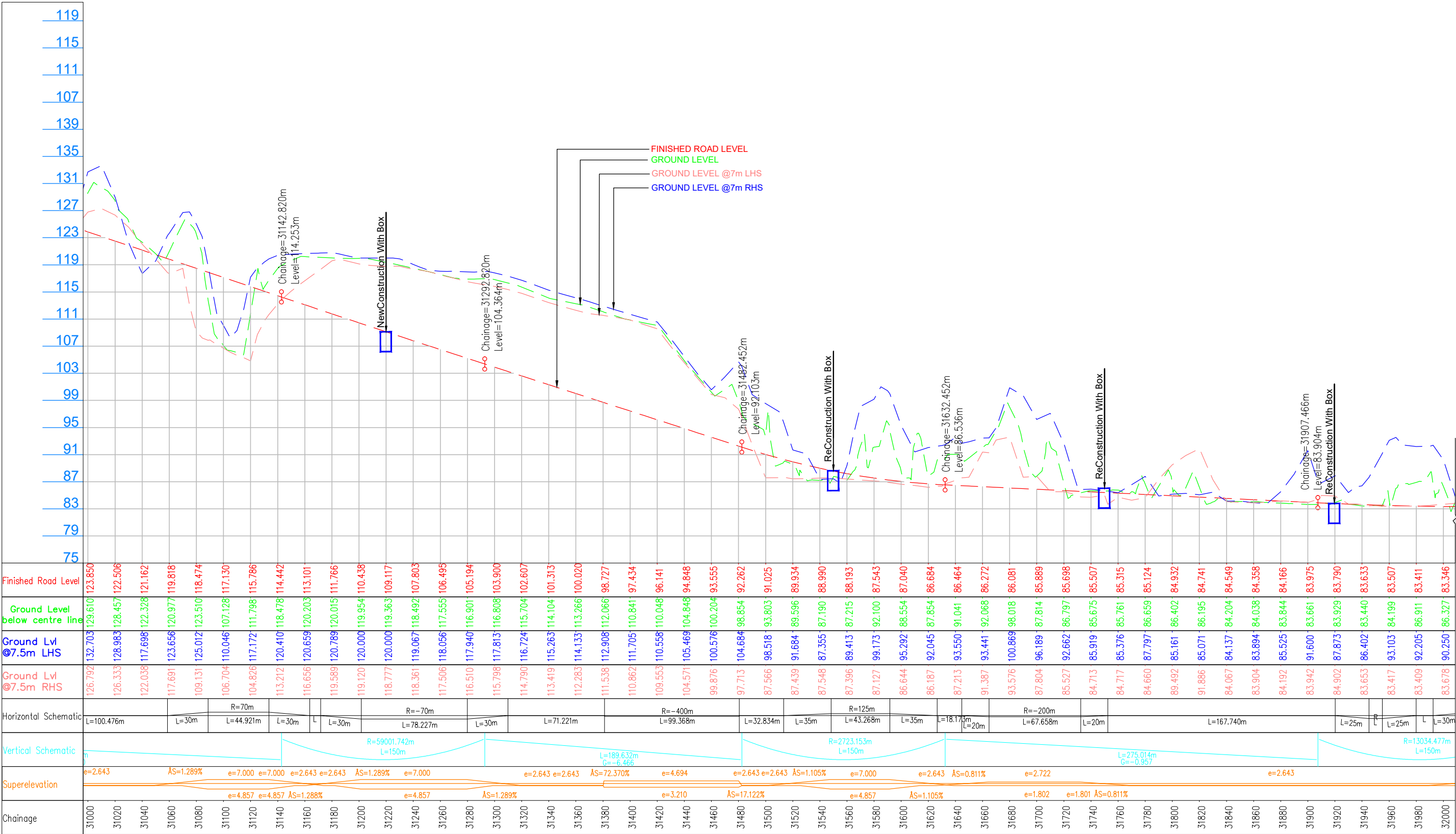
in association with Vaishnavi Infratech Services P. Ltd

Flat No. 68, Ajanta Apartment, 36 I.P.Extension
Patparganj, Delhi-110092

AGARTALA



KHOWAI



LEGEND :

- Design
- Structure
- Existing Road
- Drain

Project Title:-

CONSULTANCY SERVICES FOR FEASIBILITY STUDY, PREPARATION OF DETAILED PROJECT REPORT AND PROVIDING PRE-CONSTRUCTION SERVICES FOR UP-GRADATION OF SELECTED ROAD STRETCHES / CORRIDORS TO TWO LANE WITH PAVED SHOULDER NH CONFIGURATION UNDER BHARAT MALA PROJECT AND NATIONAL HIGHWAYS CONNECTIVITY TO BACKWARD AREAS/RELIGIOUS/TOURIST PLACES OF THE COUNTRY IN THE STATE OF TRIPURA.

AGARTALA - KHOWAI SECTION-2

CLIENT:

NATIONAL HIGHWAYS & INFRASTRUCTURE DEVELOPMENT CORPORATION LTD

Drawing Title: PLAN & PROFILE
DES. CH. 31+000 TO 32+000

Drawing No. :- TASPL/NHIDCL/FDPR/P&P/08

Scale :- 1:2000

Drn Dgn Appd

Deepak B.Mishra B.S Pandey

Sheet : 13A OF 13

Date DEC - 2019

CONSULTANT:

Technocrats Advisory Services Private Limited

in association with Vaishnavi Infratech Services P. Ltd

Flat No. 68, Ajanta Apartment, 36 I.P.Extension Patparganj, Delhi-110092